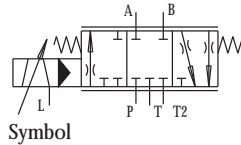
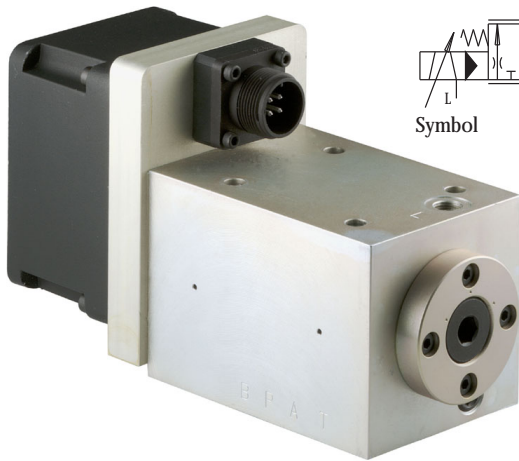


Elektrohydraulic Servovalves Typ HVM 071



Special features:

- shock resistant 100g
- high reliability
- easy service
- robust construction
- high dynamic response
- relatively insensitive to contamination
- variable metering orifices only
- $Q_{max} = 120\text{l/min}$ at $\Delta p = 70\text{bar}$
- $p_{max} = 315\text{ bar}$
- Field of application plunger cylinder in differential operation (see application pattern)

General description:

- Type : electrical input stage, torque motor, sliding spool system
 Control : torque motor actuated pilot spool
 main spool : located in 4-way sliding and correlated to the same
 Style of mounting : subplate / Cetop 05
 Mounting position : unrestricted
 Weight : 4,7kg

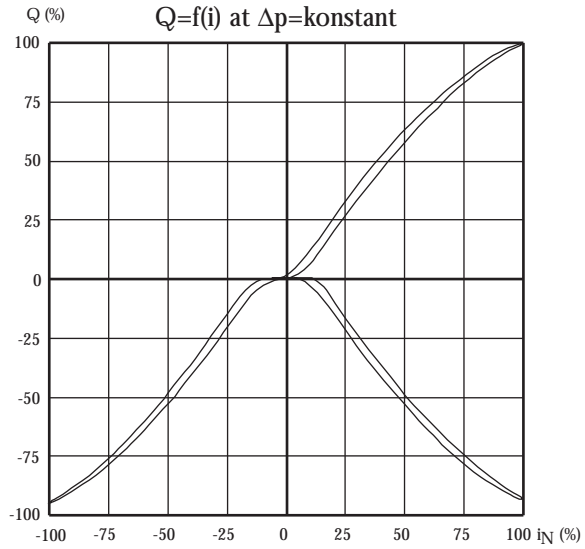
Technical Data

1. Hydraulic Data (definition according to DIN 24311)

.1	rated pressure	p_N	=	210	[bar]	
.2	operating pressure	$p_{b \text{ min}}$	=	5	[bar]	*in case of internal connection from L to T max.static pressure 10 bar continuously
		$p_{b \text{ max}}$	=	315	[bar]	
.2.1	return line pressure	$p_r \text{ max}$	=	35 % p_b *		
.2.2	in case of separate leakage line	$p_L \text{ max}$	=	10	[bar]	
.3	max. pressure (static test pressure)	p_{max}	=	450	[bar]	
.4	rated flow at $\Delta p = 70\text{ bar}$	Q_N	=	100/120	[l/min]	
.5	quiescent flow, max. at p_n	Q_{01+02}	<	5% Q_N		
.6	internal max. leakage at $p_n = 210\text{ bar}$	Q_L	<	50	[cm ³ /min]	
.7	hysteresis	H	<	5% i_N 3% i_N	(without Dither) (with Dither)	
.8	threshold sensitivity	E	<	0,5% i_N 0,2% i_N	(without Dither) (with Dither)	
.9	threshold span	S	<	2% i_N 1% i_N	(without Dither) (with Dither)	
.10	linearity deviation		<	10% i_N		
.11	flow symmetry - Q_N zu + Q_N		<	-10..+20% i_N		
.12	pressure gain (see diagram)	V_P	>	0,3 P_b / 1% i_N		
.13	overlap, standard	h	=	-1...+3% i_N		
.14	operating temperature range	δ_M	=	253...353	[K]	
.14.1	temperature drift		≤	2% i_N / 50K		
.15	viscosity range of fluid	γ_{min}	=	10...1000 mm ² /s approximate value normal: ISO VG 10...ISO VG 46		
.16	filtration of fluid		<	class 4-5 class 15/14/11	to NAS 1638 or to ISO 4406	
.17	fluid standard		=	HLP-hydraulic oils as per DIN 51524 Teil 2 (Special equipments possible)		

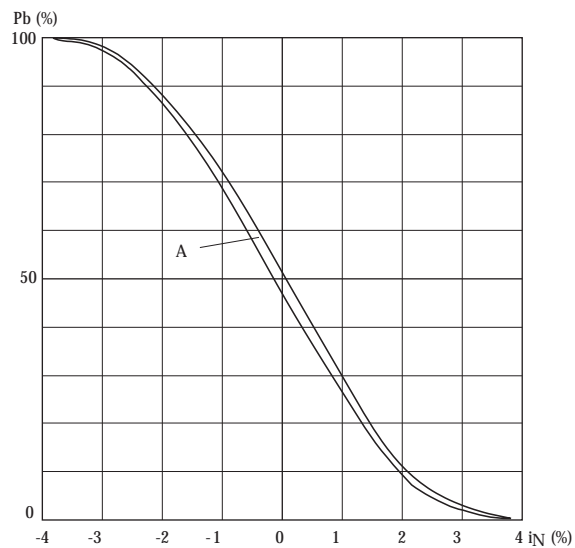
2. Diagrams HVM 071

Flow rate-signal function



Pressure gain

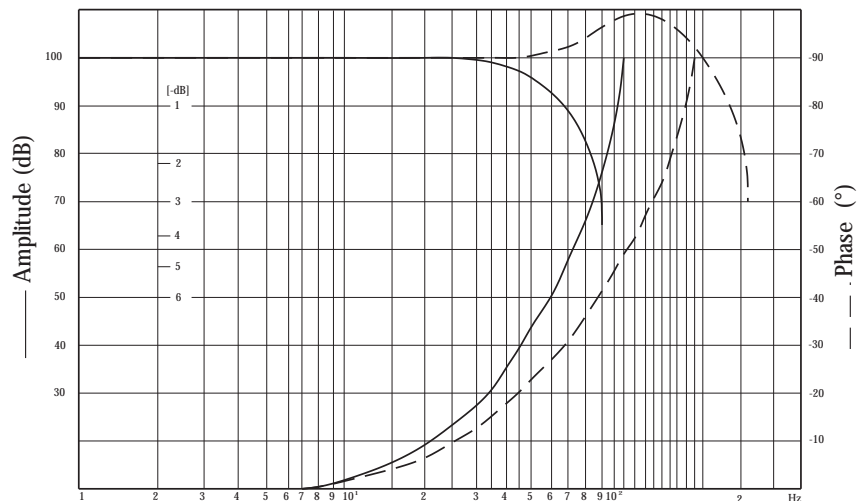
$$V_p = \tan \alpha = \frac{\Delta p}{\Delta I}$$



Frequency Response

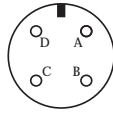
$P_V: 210 \text{ bar}$

— $\pm 100\% I$
 - - $\pm 30\% I$

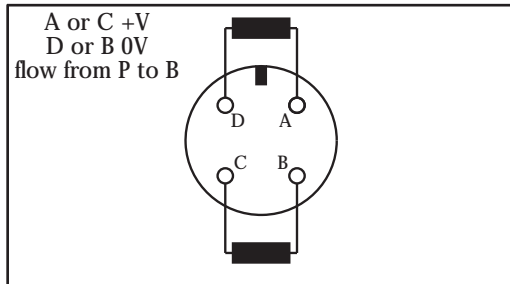


3. Electrical Data

3.1 Electrical Data without Electronic



connector 4 pol.
DIN 43563

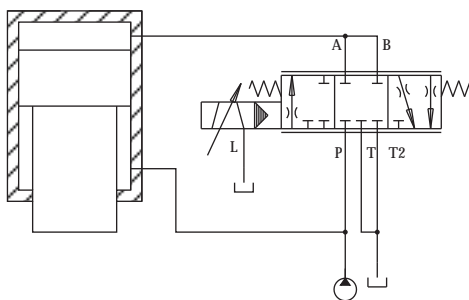


coil type		inductance	rated current	resistance	power
1	1 coil	86 mH	± 325 mA	11,5 Ω	1,35 W
	2 coil parallel	31,2 mH	± 650 mA	6 Ω	2,7 W
2	1 coil	320 mH	± 150 mA	60 Ω	1,35 W
	2 coil parallel	157 mH	± 300 mA	30 Ω	2,7 W

Field of application:

This valve was conceived for the high-dynamic application in connection with a plunger cylinder in differential circuit. Field of application: Nibble and Punch Machines

application pattern



Order Information

HVM 071 - 100 - 1111 - XX

<u>Model</u>	
071	
<u>Rated flow</u>	
QN at $\Delta p = 70$ bar	
100 l/min	
120 l/min	
<u>Seal material</u>	
1 Perbunan	
2 Viton	
3 Butyl	
4 Vulkollan	
5 Ethylen-Propylen	
<u>Resistance / coil [R20]</u>	
1 11,5 Ω	
2 60 Ω	
<u>Overlap</u>	
0 Zero overlap	
1 Positiv overlap	
2 Negativ overlap	
<u>Amount of overlap</u>	
positiv oder negative	
1..9	
<u>Design letter</u>	
assigned by manufacturer	

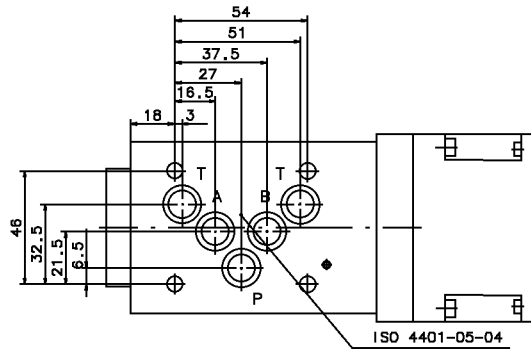
5. Accessories:

Description			Order No.
Connector	4pol.	KE CA 06 COM 14S 2S	13018
Sub plate	NG 10	HZ 036	39671
scavenger plate	NG 10	HZ 061	39686
Box-Amplifier		BOE XXX-025-0-5-0A	46965

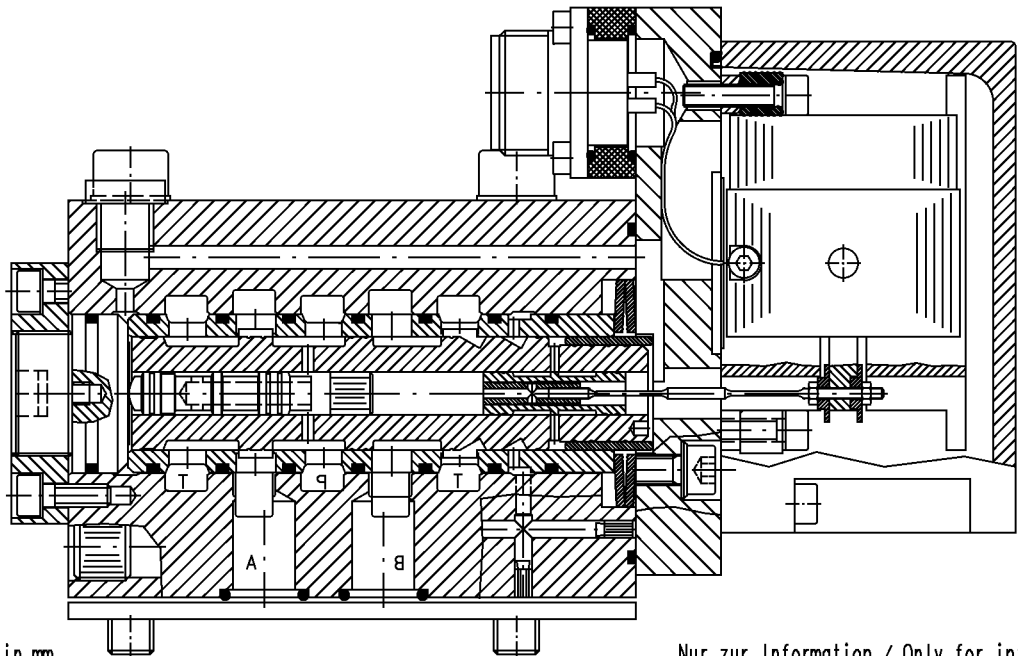
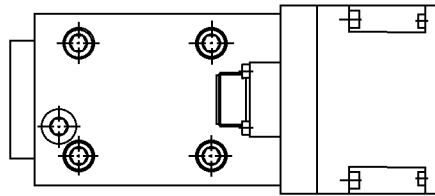
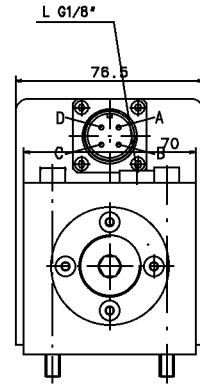
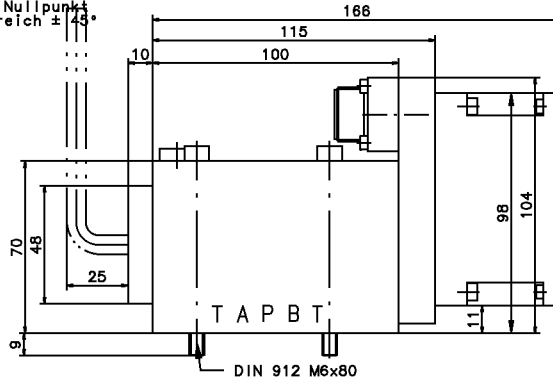
Important remarks:

Valve mounting surface must be flat within 0,02mm and smoothness not to exceed 6 μ m. Easy hydraulic Zero adjustment by means of Allen key S8 DIN 911. Max. permissible drain line pressure 10 bar. Valves with modified characteristics available. Modifications, which serve technical progress, remain reserving.

Für diese Vorlage bzw. Vorschrift techn. Art behalten wir uns alle Rechte vor. All rights reserved for this document (vgl. DIN 34)



Sechskantschraubendreher
DIN 911 s8 zum Justieren
des hydr. Nullpunktes
Justagebereich $\pm 43^\circ$



Angaben ohne Einheiten in mm
All dimensions without unit in mm

Nur zur Information / Only for information

Änderungsindex / Amendment index		
Datum Date	Name Name	
dwg.	20.09.01	Dindorf

Ventil
Valve

HVM 071-XXX-XXXX-XX

Id.- Nr.
-

Jos. Schneider Optische Werke GmbH
Ringstr. 132 55543 Bad Kreuznach
Germany

