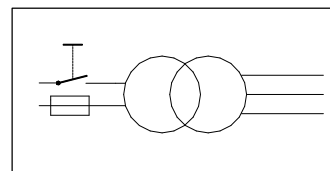


SCHNEIDER SERVOHYDRAULIK

AC power unit

Type : HE 236- ...

To be used as power supply of the amplifier and PID controller



Technical Data's

Input:

external supply: 230V AC; 50 to 60 Hz
 ±10%
 as option (see model code)
 115V AC; 50 to 60Hz

Output:

2 x 18 Volt AC
 as option (see model code)
 2 x 15 Volt AC
 2 x 20 Volt AC
 2 x 24 Volt AC

Power:

50VA
 as option (see model code)
 80VA
 120VA

mech. dimensions:

standard European card 100 x 160 mm
 front plate 50 mm (10 TE)

connector:

DIN41612 H11 pin

Mass:

500g

Accessories

for mounting in electrical cabinet

card holder DIN41612-H11pin

for mounting in 19"Rack

female connector DIN41612-H11pin

model code

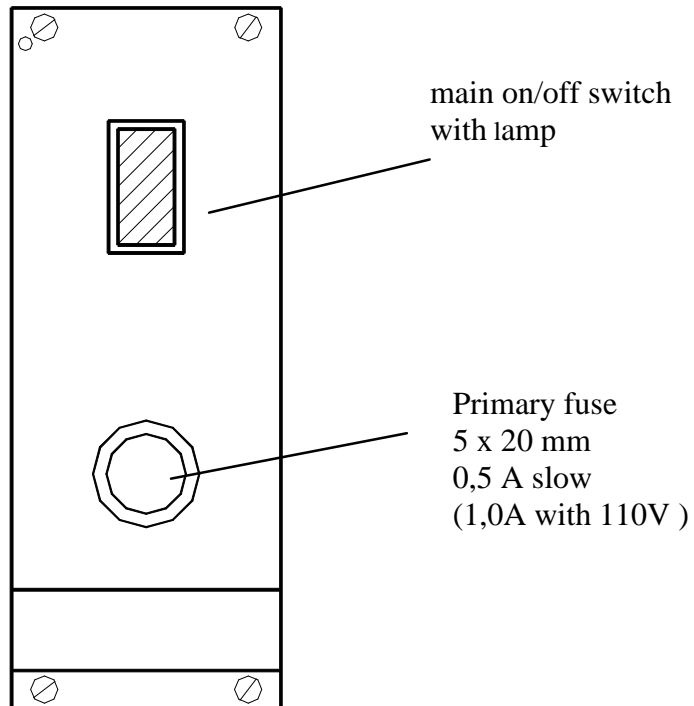
stock type:	Type	HE 236 – 220 – 050 – 18 - SF - 1A
Schneider Type		
Primary-voltage	230 or 115	
Power	50 80 100 or 120 VA	
Secondary-voltage	15 18 20 or 24 V	
code for fuse and front plate		
Construction level		

Schneider order-no.
 39158

additional possible types:

HE236-220-080-18-SF-1A	Order-No. 11381
HE236-220-120-18-SF-1A	Order-No. 23948
HE236-110-050-20-SF-1A	Order-No. 24849
HE236-110-050-24-SF-1A	Order-No. 23951
HE236-110-100-18-SF-1A	Order-No. 10529

Front view



connection diagram

