

Nivovent 21-0-HFA



This model offers the same basic principle as the 21-0 series but features an SM-L filter element and a float made from stainless steel as standard. This construction allows for the use of this model at higher operating temperatures and/or high water based or synthetic fluids.

The Nivovent 21-0 HFA types can also be equipped with a variable number of contacts according to the number of poles available in the connector. The level contacts are bistable thus only one float is required and the contacts can be adjusted any time without the need to take the whole unit from the reservoir.

This model may be used without control and display units.

- **operating temperatures up to 120°C**
- **suitable for HFA liquids**
- **combination of breather/filter, level and temperature controls**
- **bistable level contacts = only one float**
- **disposable filter elements**
- **DIN flange**
- **connector standard**
- **easy installation**
- **maintenance free except filter element**

technical data

switch tube

operating pressure	max. 1 bar
operating temperature	max. 120 °C
lowest spec. gravity	min. 0,8 kg/dm ³
float SK 221	1.4571
switch tube	brass
breather housing	PA 6
breather retention rate	SM-L = 3 µm micron

level contact

	K10	W11
function	*NC / NO	change over
min. distance of contact	40 mm	40 mm
max. operating voltage	230 V	48 V
max. current	0,5 A	0,5 A
contact load	10 VA	20 VA
part-no.	1889999	1890999

* NC=normally closed / NO=normally open, all figures at **empty reservoir**

temperature contact

max. voltage	250 V
max. current	2,5 A
max. contact load	100 VA
hysteresis	10K ± 3K

	NC*	part-no.	NO*	part-no.
switch point	50°C	TKÖ-50 1841899	TKS-50	1866999
	60°C	TKÖ-60 1841999	TKS-60	1842999
	70°C	TKÖ-70 1844999	TKS-70	1845999
	80°C	TKÖ-80 1852099	TKS-80	1867999

other temperatures upon request

* NC=normally closed / NO=normally open, all figures at **rising temperature**

temperature sensor

PT 100	
tolerance	± 0,8° C
part-no.	1120012

supplies

stilling tube made from 1.4571	
L = till 520 mm	part-no. 106000401
L = from 520 mm	part-no. 106000402

connector
other connectors
upon request

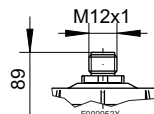
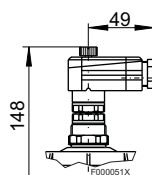
C6
6 pol. + PE
DIN 43651

M12
4 pol.

protection class
cable gland

IP 65
M20 x 1,5

IP 67**
PG 7**
** with plug fixed



max. no. of contacts
level- / temperature contacts
or

3 x K10 / 1 x TK
1 x W11 / 1 x TK

1 x K10 / 1 x TK
- / -

level contact only
or

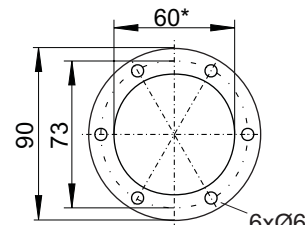
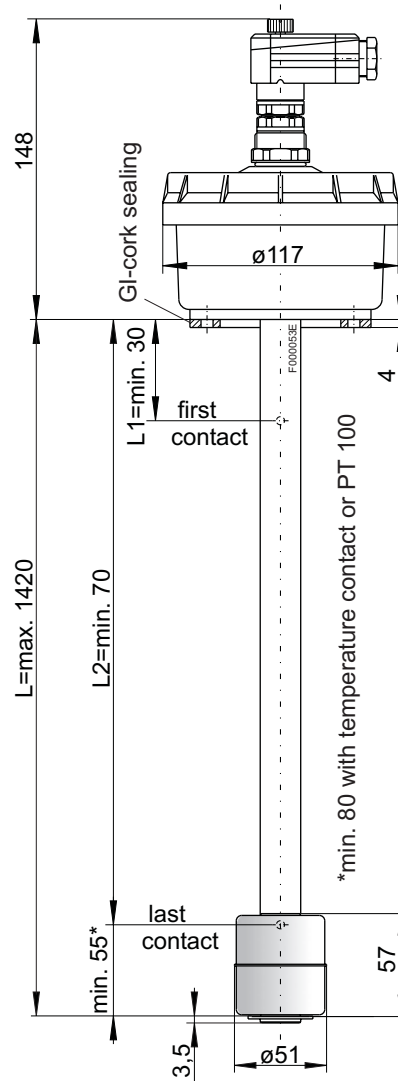
4 x K10
2 x W11

2 x K10
1 x W11

max. voltage

230 V AC/DC
48 V with change over
contact

24 V DC



according to DIN 24557 part 2
6x bolts M5x16

* By using of a stilling tube,
to entlage upon min. Ø 61 .

order information

part-no. of basic version, **without** contacts

with connector		C6	M12
L = 370 mm	Nivovent 21-0-HFA	1070199	1071199
L = 520 mm	Nivovent 21-0-HFA	1070499	1071499
L = variable	Nivovent 21-0-HFA	1070899	1071899

order example:

you need: lenght L= 580 mm , 1 level contact , connector M12 , 1.contact L1= 500 mm NC,
temperature contact normally closed by switch point 70°C

you order: 1071899 Nivovent 21-0-HFA , L= 580 , 1 x contact K10 (1889999) L1=500 NC , 1 x TKÖ-70 (1844999)