

TV17GR | High pressure valve with check valve, manual actuation

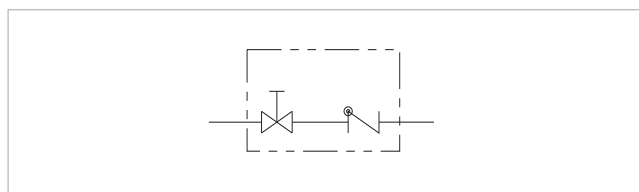
Specification



Pressure range: 0 - 420 bar

- Valve with OFF / ON function
- Protection against back flow
- Actuation: manual

The TV17GR is a manual stop valve which can switch the gas flow OFF or ON, comparable to a two-way ball valve, but with a substantially higher durability. The compact design makes the TV17GR ideal for installation into gas process plants. A integrated check valve prevents reverse flow.



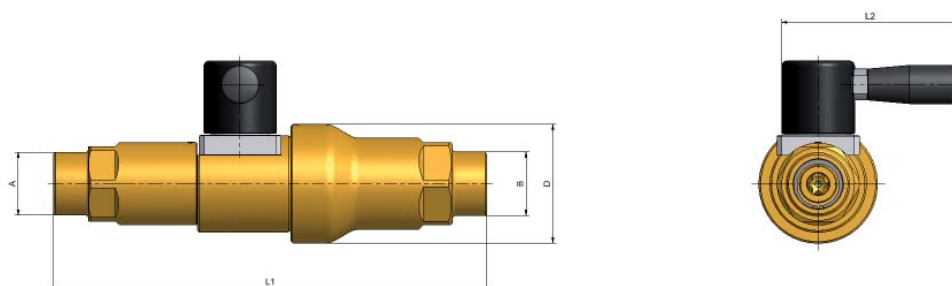
TV17GR - Symbol

Features

Characteristic	Specification
Actuation	Manual
Valve function	By actuation depressurized OFF or ON
Flow rate	Media flow one-way from inlet B to outlet A
Automatic venting	No
Check valve	Yes
Vacuum operation	Yes
Seals within media flow	NBR, others on request
Parts within media flow	Brass and stainless steel, others on request
PS (allowed operating pressure)	0 to 420 bar

TV17GR | Technical data

Dimensions



Side view

Front view

Ordering

Part No. TV17GR	DN	Inlet B Outlet A	L1	L2	D
C1-51558	8	M28x1.5 external thread	204	97	55
C1-84716	12	UNF 1 3/8" - 12 external thread	239	97	65

Approx. dimensions in mm

Options & Accessories

The TV17GE is also available oxygen cleaned and free of oil and grease. Please indicate when ordering.
Other materials and seals on request.
A large variety of adapters are available, see page 24 of our catalogue 55 for linear valves.