



## ***Level or level and temperature sensor NT 63***

- flange according to DIN 24557 part 2
- continuous liquid level measurement
- continuous liquid level and temperature measurement
- 4-20 mA outputs (2-10 V on request)
- resolution 5 mm (liquid level)
- various connector options
- reliable, dynamic float system
- float and probe in stainless steel optional
- probe length up to 1420 mm, longer on request

## Technical data

## NT 63

### Basic unit

**K** = continuous level and temperature measurement

**KN** = continuous level measurement

operating pressure	max. 1 bar
operating temperature	-20 °C to +80 °C
min. spec. density of fluid	0,80 kg/dm <sup>3</sup> with float SK 604 0,85 kg/dm <sup>3</sup> with float SK 221
lengths	280, 370, 500, 670, 820, 970 1120, 1270 and 1420 mm other lengths on request)

Material / Construction	MS	VA
float	hard PU (SK 604)	1.4571 (SK 221)
flange DIN 24557 part 2	PA	PA
immersion tube	brass	1.4571

### Level measurement

resolution	5 mm
supply voltage (U <sub>B</sub> )	10 - 30 V DC
ripple	< 1 %
output signal	4-20 mA
load Ω max.	(U <sub>B</sub> - 7,5 V) / 0,02 A

### Temperature measurement

#### for Type 63 K

sensor	Pt 100 class B DIN EN 60 751
tolerance	± 0,8 °C
supply voltage (U <sub>B</sub> )	10 - 30 V DC
ripple	< 1 %
output signal	4-20 mA (≈ 0-100 °C*)
load Ω max.	(U <sub>B</sub> - 7,5 V) / 0,02 A
	* on request other ranges

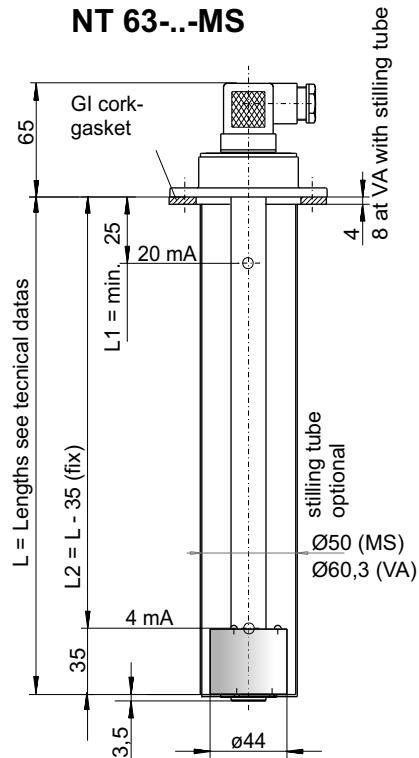
### included in delivery

fixing bolts (6 pieces) and GI cork-gasket

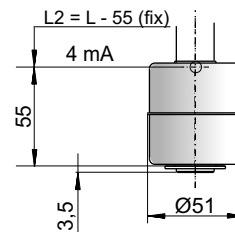
### Options

stilling tube **SSR** Material like immersion tube

## NT 63--MS

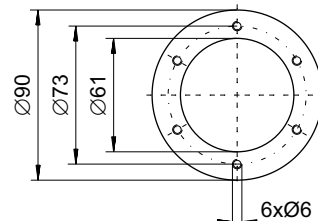


## NT 63-- VA



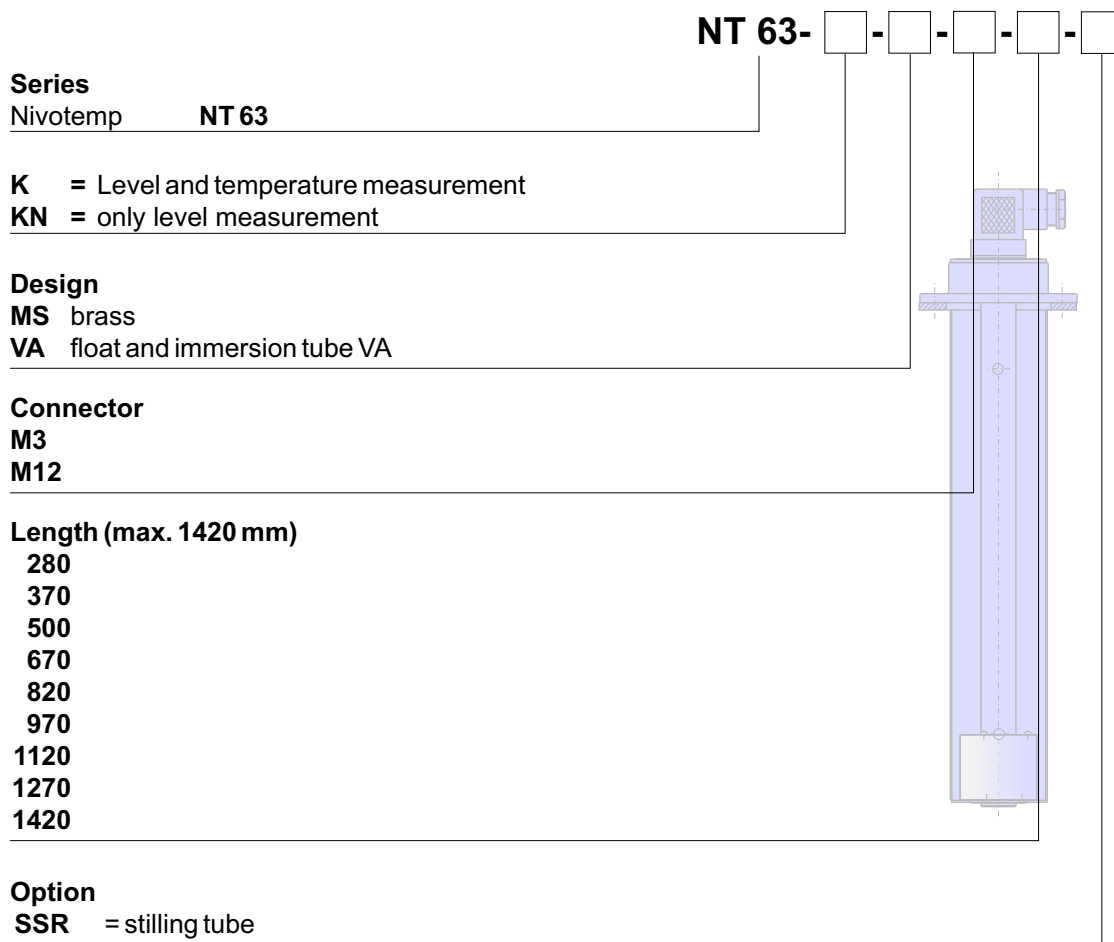
### Flange picture

according to DIN 24557/part2



Connector	M3 (DIN EN 175301-803) 3 pol. + PE IP 65 PG 11	M12 (Sockel) 4 pol. IP67**
protection class cable connection		**with casted connector head
Standard pin assignment		
<b>K</b> continuous level and temperature		
<b>KN</b> continuous level		

## Product code for NT 63



### Accessories:

Part No.	Description
91 44 05 0010	Connecting cable M12x1, 4-pol., 1,5 m, elbow connector (female) and straight connector (male)
91 44 05 0046	Connecting cable M12x1, 4-pol., 3,0 m, elbow connector (female) and straight connector (male)
91 44 05 0047	Connecting cable M12x1, 4-pol., 5,0 m, elbow connector (female) and wire

Optionally a programmable display and control unit is available which shows and monitors the measurement, see data sheet DE 18 0201.

### Example for order

You need: Level and temperature measurement with a resolution of 5mm, construction brass, with M12 connector and length L=670 mm

You order: NT 63-K-MS-M12-670