

The new standard for level and temperature surveillance

- flange according to DIN 24557 part 2
- combined, continuous surveillance of level and oil temperature
- highly visible LED display shows the actual temperature in the basic mode, with status indication of the switching outputs, turnable 270°
- menu structure based on the VDMA guideline 24574 ff.
- four programmable outputs optional as level and temperature signal
- alternative one analogue output each (current or voltage adjustable) for level and temperature plus two free programmable outputs
- output characteristic for switching output adjustable as window or hysteresis
- Two switching outputs adjustable as frequency output (1 to 100 Hz)
- Min/Max memory, logbook function
- 2x M12 connector base 4-pol.
- reliable, dynamic float system
- immersion tube in matched lengths up to 1420 mm max., on request other lengths



Technical data

NT67-XP

Basic unit

operating pressure
operating temperature
min. spec. density of fluid

max. 1 bar
-20 °C to +80 °C
0,80 kg/dm³ with float SK 604
0,85 kg/dm³ with float SK 221
280, 370, 500, 670, 820, 970
1120, 1270 and 1420 mm
(on request other lengths)

lengths

weight
at L=280 mm
plus per 100 mm

MS
approx. 850 g
approx. 30 g

VA
approx. 950 g
approx. 50 g

Material / Design

float
immersion tube
flange DIN 24557 part 2

MS
hard PU (SK 604)
brass
PA

VA
1.4571 (SK 221)
1.4571
PA

Level measurement

measuring resistor
resolution

reed contact
5 mm

Temperature measurement

measuring resistor
tolerance

Pt 100 (RTD) class B, DIN EN 60 751
± 0,8 °C

Display and control unit

display
operation
storage
current consumption at power up
operating current consumption
supply voltage (U_B)

XP
4 digit 7 segment LED display
over 3 Tasten
Min. and Max. values
approx. 100 mA for 100 ms
approx. 50 mA
10 - 30 V DC
(nominal voltage 24 V DC)

ambient temperature
protection class

-20 °C to +70 °C
IP65

indicating device
indicating range

Level
%, cm, L, i, Gal
adjustable

Temperature
C / F
-20 °C to +120°C
or 4 °F to 248°F
0 °C to 100 °C
or 32 °F to 178 °F

range of alarm indication

e. g. 0-100%

accuracy

1% of the final value

Following cards are available

connector (base)
PNP transistor output,

-4S
2 x M12 - 4 pol
4 x free programmable (plus RSP)
optional allocation for e.g.
2 x Level / 2 x Temperature
optional 1 x PNP output allocable
as alarm logbook
max. 0,5 A per output
max. 1 A overall

alarm memory

current PNP output

connector (base)
PNP transistor output,

-2S-KN-KT
2 x M12 - 4 pol
2 x free programmable with free
selectable allocation
it is possible to choose an output for
logging
max. 0,5 A per output
max. 1 A overall

alarm memory

current PNP output

Analogue output
programmable as

Level
1 x 4 - 20 mA, 2-10 V,
0-10 V or 0-5 V
(U_B - 8 V) / 0,02 A

max. load

Analogue output
programmable as

Temperature
1 x 4 - 20 mA, 2-10 V,
0-10 V or 0-5 V
(U_B - 8 V) / 0,02 A

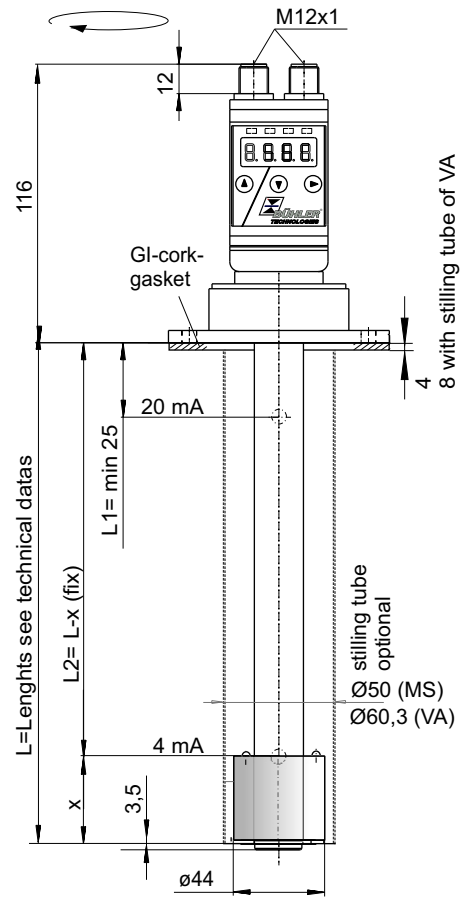
max. load

Options

stilling tube

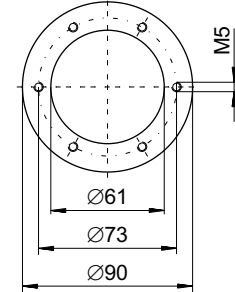
SSR
material same as immersion tube

Housing turnable about 270°

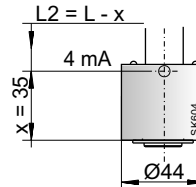


Flange picture

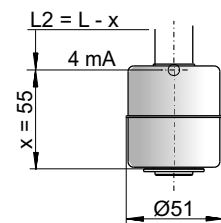
according to DIN 24557/part 2



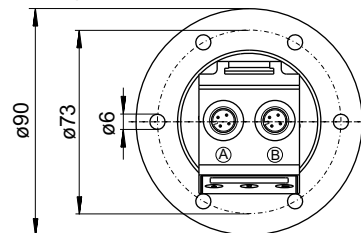
Float SK 604 for NT67-XP-MS



Float SK 221 for NT67-XP-VA



Top view



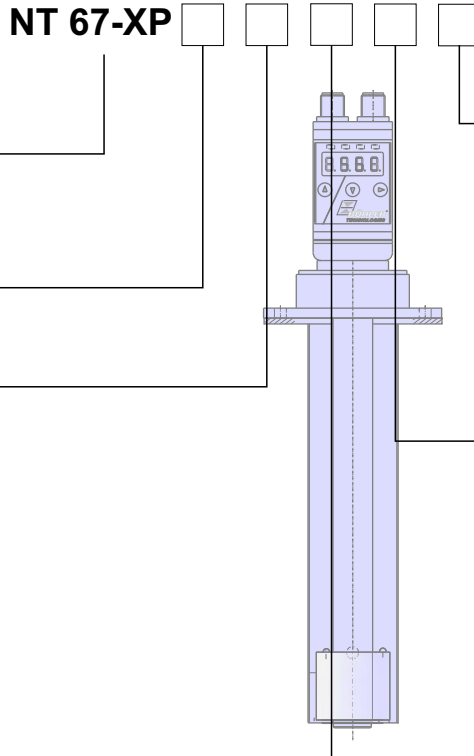
Product code for NT 67-XP

Series
Nivotemp NT 67-XP
with display and control unit

Design
MS brass
VA float and immersion tube VA

Connector
2M12

Length (max. 1420mm)
280
370
500
670
820
970
1120
1270
1420



Option
SSR = stilling tube

Card
-4S
4 x PNP transistor output
-2S-KN-KT
2 x PNP transistor output
1 x analogue output level
1 x analogue output temperature

O
P
T.

A
L
T
E
R
N
A
T
I
V
E

Accessories:

Part No.	Description
91 44 05 0010	Connecting cable M12x1, 4-pol., 1,5 m, elbow connector (female) and straight connector (male)
91 44 05 0046	Connecting cable M12x1, 4-pol., 3,0 m, elbow connector (female) and straight connector (male)
91 44 05 0047	Connecting cable M12x1, 4-pol., 5,0 m, elbow connector (female) and wire
91 44 05 0048	Connecting cable M12x1, 8-pol., 1,5 m, elbow connector (female) and straight connector (male)
91 44 05 0049	Connecting cable M12x1, 8-pol., 3,0 m, elbow connector (female) and straight connector (male)
91 44 05 0033	Connecting cable M12x1, 8-pol., 5,0 m, elbow connector (female) and wire

Example for order

You need: Level and temperature measurement with 5 mm resolution, brass design, 2xM12 connector, length L=670mm with 2 programmable PNP - switch-points and analogue output for level and temperature

You order: NT 67-XP-MS-2M12 / 670-2S-KN-KT

Standard pin assignment NT 67-XP

