

FGM 30 (60) Pi 2728-57 Off-line filter unit



This mobile off-line filter unit can be used for in-house application, as a service unit on installation sites, or for after sales service teams. The physical dimensions are such that the unit can fit easily into a service van.

The gerotor pump with either 30 or 60 l/m flow rate has very low noise emissions and contributes to the relatively low weight of the unit.

The Mahle Pi 270 filter is also light and compact. With two cartridges installed in parallel it offers a large filtration area with high dirt-holding capacity at low cost.

The retention rates can be selected as β_3 , β_6 , β_{10} or β_{25} depending on the required cleanliness.

The unit incorporates a drip pan with drain cock and safe stowage of the suction and pressure hose. The suction hose has a coarse inlet filter to protect the pump from debris.

Two fixed and two revolving castors together with a folding handle provide a good manoeuvrability.

technical data

pump	gerotor pump with low dirt sensitivity directly attached to the shaft of the electric Motor. Suction hose with coarse strainer.
controls	motor safeguard, 5 m oil resistant cable CEE connector.
filter	Mahle PI 2728-57, with optical pollution indicator
bypass	cracking pressure delta p 3,5 bar
contamination indicator	cracking pressure delta p 2,2 bar

Accessories included

	30 l/min.	60 l/min.	length
suction hose	DN 25	DN 32	L = 2 m
pressure hose	DN 20	DN 20	L = 2 m

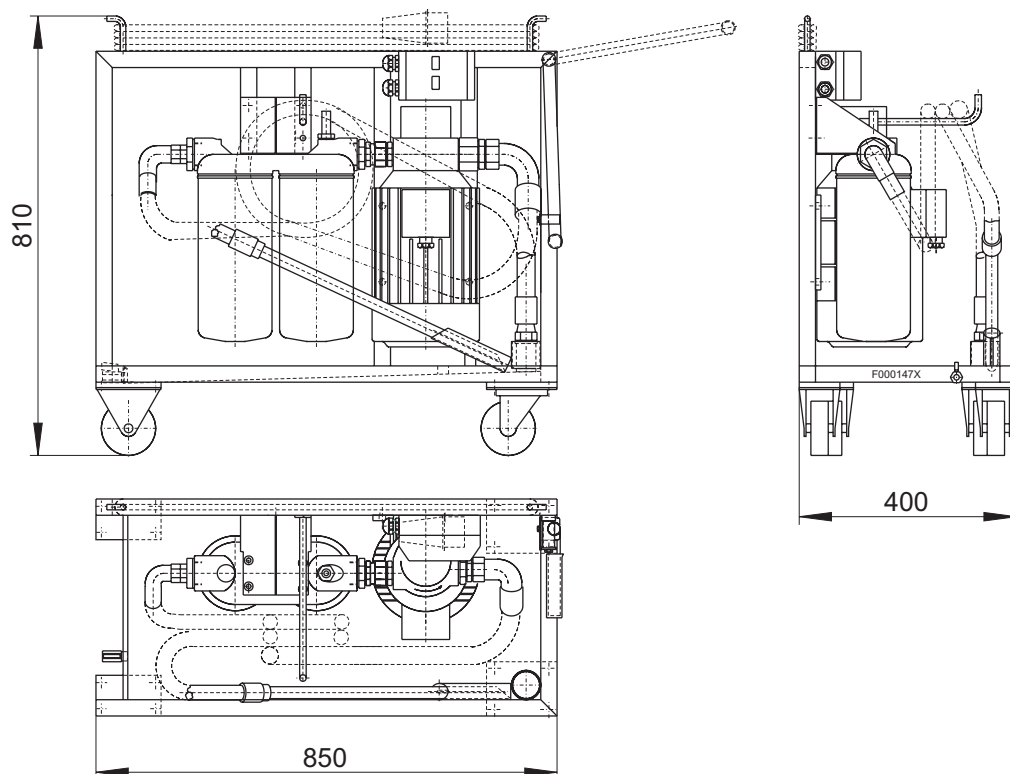
filter cartridges (not part of delivery)

retention rate	type	part-no.
3 µm	HC 66	78714750
6 µm	HC 60	7478829
10 µm	HC 35	7643844
25 µm	HC 36	7643851

motor / pump unit

flow l/min.	power	voltage V	rotational speed	pressure max. (Bar)	Viscosity max.
30	0,75 KW	230/400 V, 50 Hz ± 5% 276/480 V, 60 Hz ± 5%	1410 rpm	10	300 mm ² /s
60	2,2 KW	230/400 V, 50 Hz ± 5% 276/480 V, 60 Hz ± 5%	1410 rpm	10	300 mm ² /s

dimensions



order information

FGM 30 / Pi 2728-57	part-no. 270 020 30
FGM 60 / Pi 2728-57	part-no. 270 020 20