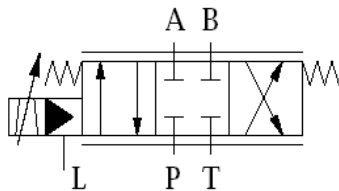


# HVM 056

## Electrohydraulic Servovalve



Typical applications: **Testing machines,  
Rolling Mills**

### Special features

- High reliability
- Easy maintenance
- Robust construction
- High dynamic response
- Relatively insensitive to contamination
- Variable metering orifices only

### General Specification

- Step response 0 - 90% in ms : 5
- Rated flow in l/min : 5 - 65
- Operating pressure ( $P_B$ ) in bar : 5 - 315
- Type : Electrical input stage, torque motor, sliding spool system
- Control : Torque motor actuated pilot spool
- Main spool : Located in 4-way sliding and correlated to the same
- Style of mounting : Sub-plate
- Mounting position : Unrestricted
- Weight : 1.75kg