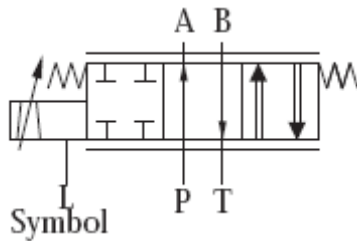


HVM 025-XXX-X260-4G-BY

Electrohydraulic Servovalve for Bypass-operation



NO IMAGE
AVAILABLE

Typical application: Please call us

Special features

- Work with 1 or 2 metering edges
- High reliability
- Easy maintenance
- Robust construction
- High dynamic response
- Relatively insensitive to contamination
- Variable metering orifices only
- Pmax = 210 bar

General Specification

- **Type** : Electrical input stage, torque motor, sliding spool system
- **Pilot** : None
- **Main spool** : Directly controlled sliding spool
- **Style of mounting** : Sub-plate
- **Mounting position** : Unrestricted
- **Weight** : 1.3kg