

Type TVR2

Check Valves (DN 8 mm)

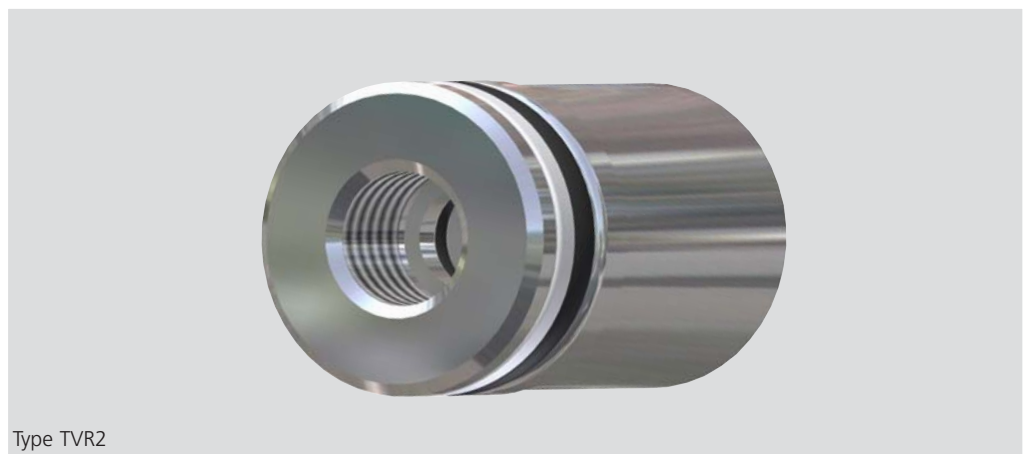
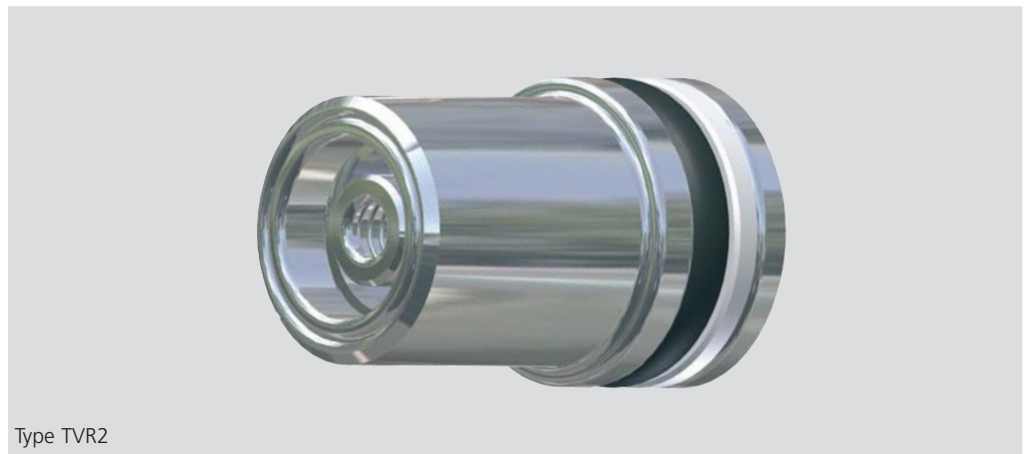
WEH has developed an entirely novel check valve suitable for use in an extreme environment that brings the valve into contact with both distillate fuel oil and natural gas containing traces of H₂S. This specially designed set of valves is now in full operation after extensive trials.

Specified to control the mixture of highly flammable fuels within precise parameters the valves are designed to operate in temperatures up to 280°C. Despite having a low cracking pressure they operate consistently in a variety of orientations.

This bespoke solution is the result of a special WEH product development programme.

Features:

- Low cracking pressure
- Temperatures up to 280 °C
- Suitable in extreme environment
- Compact design



Type TVR2

Technical Data:

Application:

Environments combining high temperature and aggressive media such as fuelling systems for gas turbines.

Operating pressure:

up to max. 100 bar

Temperature:

Up to max. 300 °C

Design:

All parts stainless steel, seals FFKM

Media:

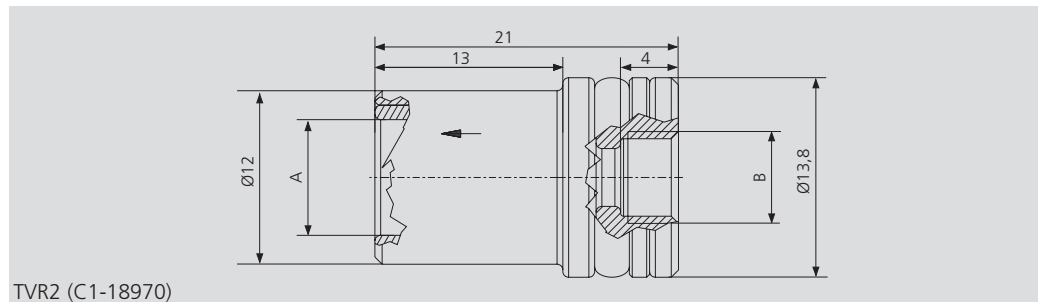
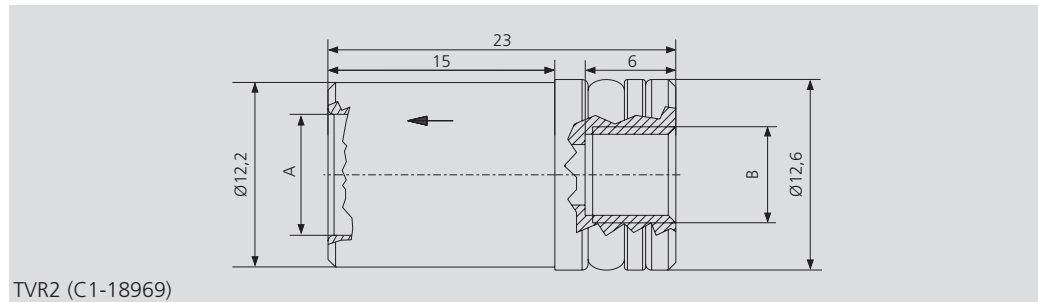
Gasoline, Diesel, natural gas (H₂S)

Cracking pressure:

0,14 - 0,35 bar (C1-18969)

0,7 - 0,85 bar (C1-18970)

Dimensions (mm):



Ordering:

Description	Inlet B	Outlet A	Part No.
TVR2	UNF 1/4"-28 internal thread	Bore 8 mm Ø	C1-18969
TVR2	UNF 1/4"-28 internal thread	Bore 8 mm Ø	C1-18970

Manufacturer

WEH GmbH
 Siemensstraße 5
 D-89257 Illertissen
 Tel.: +49 73 03 9 60 90
 Fax: +49 73 03 9 60 9 - 9999
 E-mail: sales@weh.com
 http://www.weh.com

Right is reserved to make changes without prior notification.

© Copyright by WEH GmbH 2005. WEH is not responsible for typographical errors and omissions and damages arising herefrom.