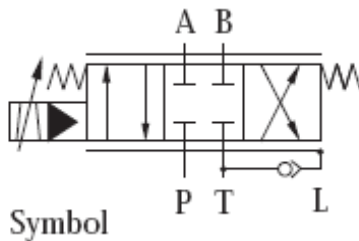


HVM 058

Electrohydraulic Servovalve



NO IMAGE
AVAILABLE

Typical application: Please call us

Special features

- High reliability
- Easy maintenance
- Robust construction
- High dynamic response
- Relatively insensitive to contamination
- Variable metering orifices only
- $Q_{max} = 20 \text{ l/min}$ at $\Delta p = 70 \text{ bar}$
- $P_{max} = 315 \text{ bar}$

General Specification

- **Type** : Electrical input stage, torque motor, sliding spool system
- **Control** : Torque motor actuated pilot spool
- **Main spool** : Located in 4-way sliding and correlated to the same
- **Style of mounting** : Sub-plate / Cetop 03
- **Mounting position** : Unrestricted
- **Weight** : 1.15kg