

TV17GR | High pressure valve with check valve, pneumatic actuation

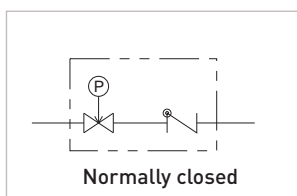
Specification



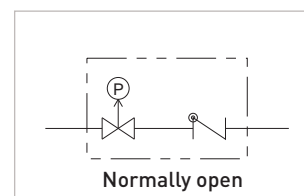
Pressure range: 0 - 420 bar

- Valve with OFF / ON function
- Protection against back flow
- Actuation: pneumatic

The TV17GR is a stop valve which can switch the gas flow OFF or ON, comparable to a two-way ball valve, but with a substantially higher durability. The compact design makes the TV17GR ideal for installation into gas process plants. The valve can either be ordered normally closed or normally open. An integrated check valve prevents reverse flow.



Normally closed



Normally open

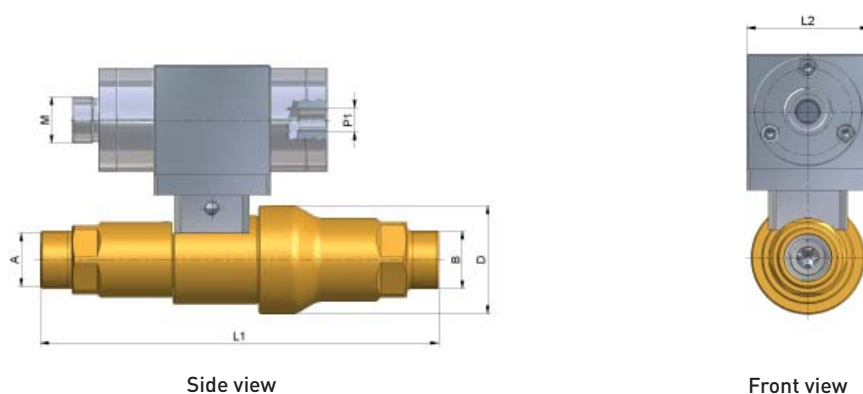
TV17GR - Symbols

Features

Characteristic	Specification
Actuation	Pneumatic for automatic control e.g. via SPS
Valve function	By actuation depressurized OFF or ON
Flow rate	Media flow one-way from inlet B to outlet A
Automatic venting	No
Check valve	Yes
Vacuum operation	Yes
Seals within media flow	NBR, others on request
Parts within media flow	Brass and stainless steel, others on request
PS (allowed operating pressure)	0 to 420 bar
Pilot pressure	6 to 8 bar

TV17GR | Technical data

Dimensions



Ordering

Part No. TV17GR	DN	Normal position	Inlet B Outlet A	Pilot pressure P1	M	L1	L2	D
C1-51570	8	OFF	M28x1.5 external thread	G1/4" internal thread	M28x1.5 external thread	204	70	55
On request	8	ON	M28x1.5 external thread	G1/4" internal thread	M28x1.5 external thread	204	70	55
C1-75165	12	OFF	UNF 1 3/8" - 12 external thread	G1/4" internal thread	M28x1.5 external thread	239	70	65
On request	12	ON	UNF 1 3/8" - 12 external thread	G1/4" internal thread	M28x1.5 external thread	239	70	65

Approx. dimensions in mm

Options & Accessories

The TV17GE is also available oxygen cleaned and free of oil and grease. Please indicate when ordering.

Other materials and seals on request.

A large variety of adapters are available, see page 24 of our catalogue 55 for linear valves.